

Corporate Accountability Framework

Board Committees

Board of Directors

Foundations

Auxiliaries/Volunteers

Sue Davey
Executive Assistant

Andrew Williams
President
& Chief Executive Officer

Dr. Kevin Lefebvre
Alliance
Chief of Staff

Medical Advisory
Committee

Mary Cardinal
Vice President People,
Engagement & Social Accountability

Lynanne Mason
Vice President Partnerships,
Transformation & Chief Nursing Executive

Iris Michaels
Vice President Performance,
Finance & Digital Innovation

Adam Hahn, Director
Human Resources & Environmental
Services

Julie Houben, Director
Quality, Patient Safety
& Interprofessional Practice

Ryan Itterman, Director
Diagnostics, Regional Pharmacy &
Chemotherapy

Laurie Roberts, Corporate Lead
Medical Staff

Michelle Jones, Corporate Lead
Patient Experience & Privacy

Penny Cardno, Director
Clinical Projects & Partnerships

VACANT, Director
Patient Care

Lori Merner, Director
Patient Care & Nursing Professional
Practice/Educators

Jacqui Tam, Director,
Patient Care
& Nurse Practitioner Program

Doug Biesinger, Director
Facilities Management

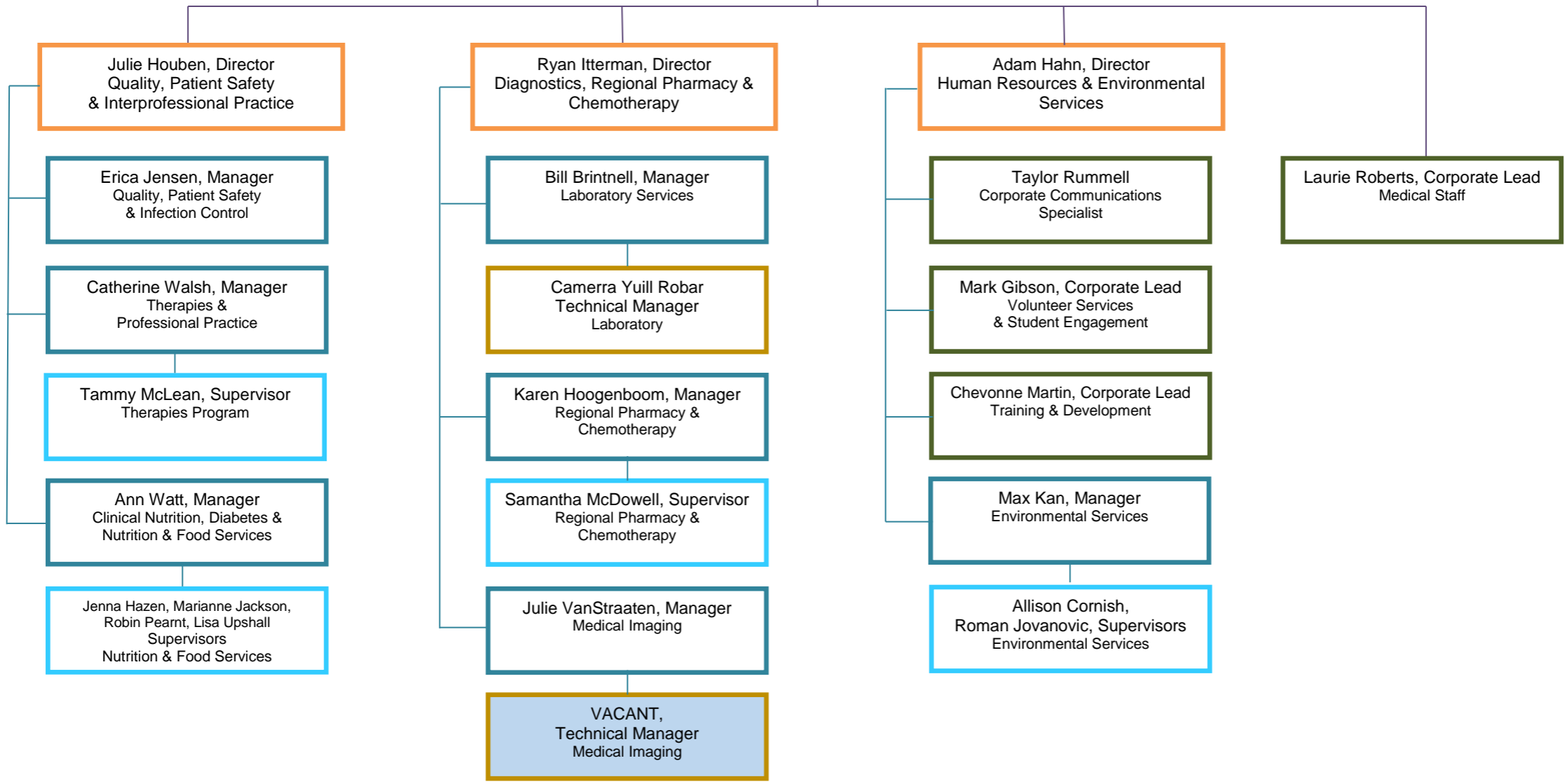
Daniel Moutte, Director
Regional Information Technology and
Health Information

Riuxu Wang, Director
Finance and Decision Support



Operational Accountability Framework

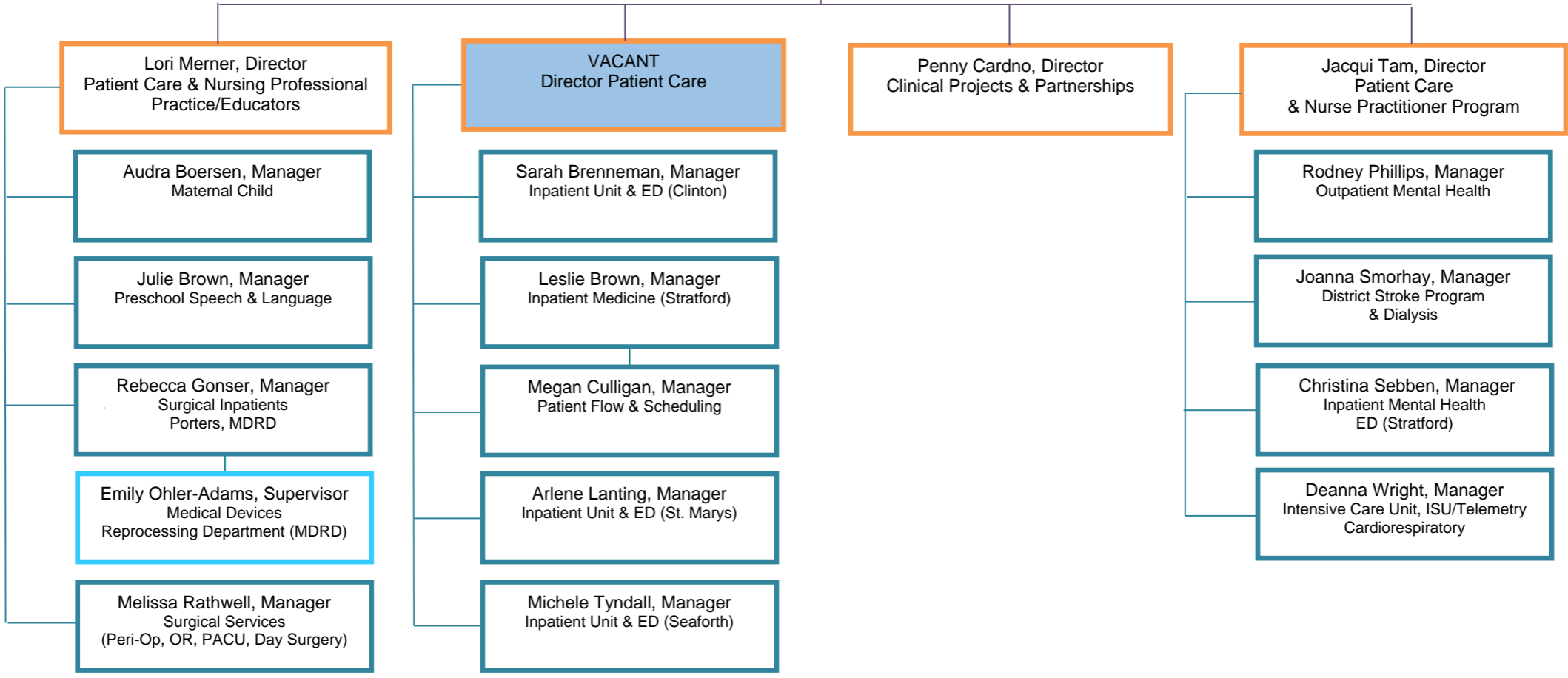
Mary Cardinal
Vice President People,
Engagement & Social Accountability





Operational Accountability Framework

Lynanne Mason
Vice President Partnerships,
Transformation & Chief Nursing Executive





Operational Accountability Framework

